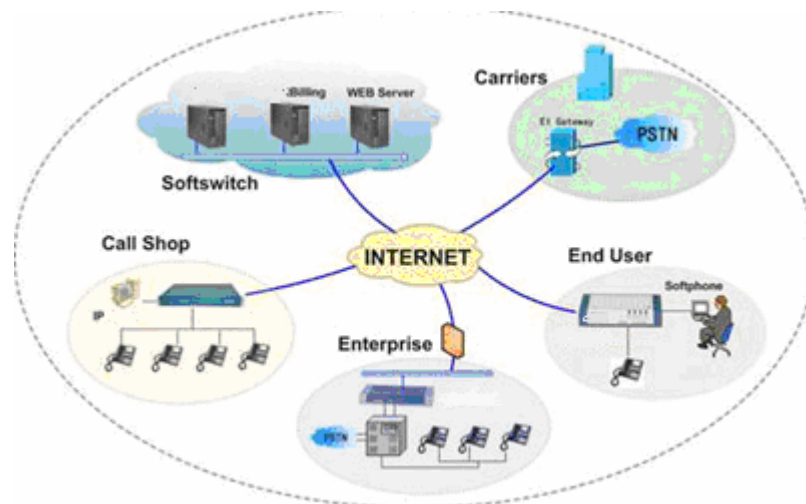


Softswitch SW0002 Introduction

The SW0002 softswitch is based on SIP protocol system. According to the characteristics of Internet network status and recent VoIP service, it is the telecom platform which supplies the integrated VoIP voice, signal exchange, administration and service upon the NGN. Its release constructs a high-powered but low-cost opening operation system platform for telecom carriers, virtual carriers and telecom system operators.

The core functions of SW0002 besides the normal gateway and terminal's functions like registry, record maintaining, call establishment, administration etc, are the advanced functions including RTP exchange of media stream, load equilibrium, best choosing of router, user managing, security managing etc. This system has been adopted by some Chinese carriers and US carriers. It can easily adapt the complicated network environment all over the world. Its operating model applies the separate way of managing and carrying. Its main core program runs at a high-powered server, and the other systems, including CDR solving and network managing, are separately installed at the other sub-servers. It also can be managed by long-distance model, make the managing more flexible.

Basic business managing including: Control center, Business center, call managing, System setup, administrator managing.



--Key functions including:

- SIP channels based
- Voice, fax and video calls supported
- High switching capability and compatibility based on commercial VoIP protocol stack
- Built-in IVR and service call flow, no hardware voice card needed
- NAT traversal support including multi-layer NAT traversal
- Web GUI for Configuring and maintaining

- Abundant value-added services and flexible service extension interface
- CDR files provided
- Hot line; Call forward; Call forward, busy; No Answer Forward
- 3-way conference
- RADIUS and MD5 supported
- Real-time monitoring
- Centralized monitoring and managing by NMS
- 100,000 lines system and above:

--Applications of SW0002 softswitch

- Application of Carriers
- Consummate the cover of VoIP to the last kilometer
- Offering the prepaid telephone card business
- Offering the after-paid telephone defining service
- Collecting of the phone call business at call shop, net-café, wireless AP.
- Offering the self-defined service for carriers

--Applications of Enterprise

- Inner phone call in enterprise
- Phone calls among branches
- Phone call among enterprises
- Enterprise user make calls to PSTN though VoIP Gateway

--Personal Applications

- People can make calls to the enterprise user through the network of carriers
- People can make calls to personal user
- People can make call to PSTN through network of carriers