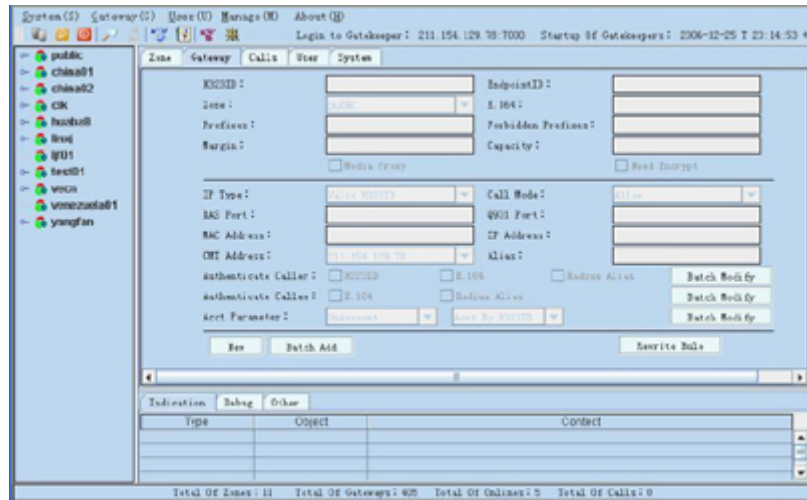


Softswitch SW0003 Introduction

--Description

SW0003, a comprehensive management control platform for VoIP Network, offer a strong background support for telecom operators, virtual operators, call charge agents. It is the best choice for enterprise to manage and maintain IP phone network.



---Main Structure

SW0003 includes the following components: CDR-search, billing, signal process, media process, telnet proxy server.

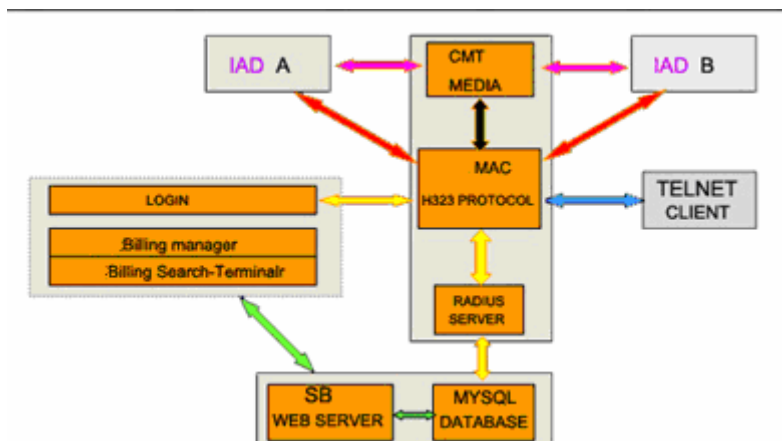
CDR-search includes client interface, WEB server, MySQL database.

Billing includes SW0003 net manage, Radius server, MySQL database.

Signal process mainly transfer signal by SW0003 net manage.

Media process mainly transfer media by CMT.

Telnet proxy server carries out by Telnet proxy component which is in SW0003 net manage.



The green process shows billing-manage and billing-search process of SW0001.

The yellow process shows SW0003's verifying by Radius and writing into database

The red process shows that two IADS send and receive RAS, H225, H245 signal each other.

The purple process shows that two IADS send and receive voice by CMT each other.

The blue process shows that the TELNET clients can login in TELNET proxy server long_distance.

The black process shows SW0003 send media parameter to CMT, these parameter includes Call-IP, call encrypts or not, call NAT or not; CALLED-IP, called encrypts or not, called NAT or not.

Client Exchange Message of System Structure

-- **Function description**

- H.323 channels based
- Voice and fax supported
- NAT traversal supported including multi-layer NAT traversal,
- Web GUI for Configuring and maintaining
- RADIUS and MD5 supported
- Encryption to prevent illegal IAD access supported
- CDR files provided
- Callee prefix replace, caller ID replace
- Trunking groups(one number or one line)
- Multiple routing policies for alternative upon congestion, coordinate excellently
- Interconnection of H.323 Gateways and Gatekeepers supported
- More Gatekeepers at one time registered
- More softswitch systems peering
- Media flow conversion supported
- Real-time monitoring
- Centralized monitoring and managing by NMS
- 10,000 register users
- Maximum 3000 lines concurrent